

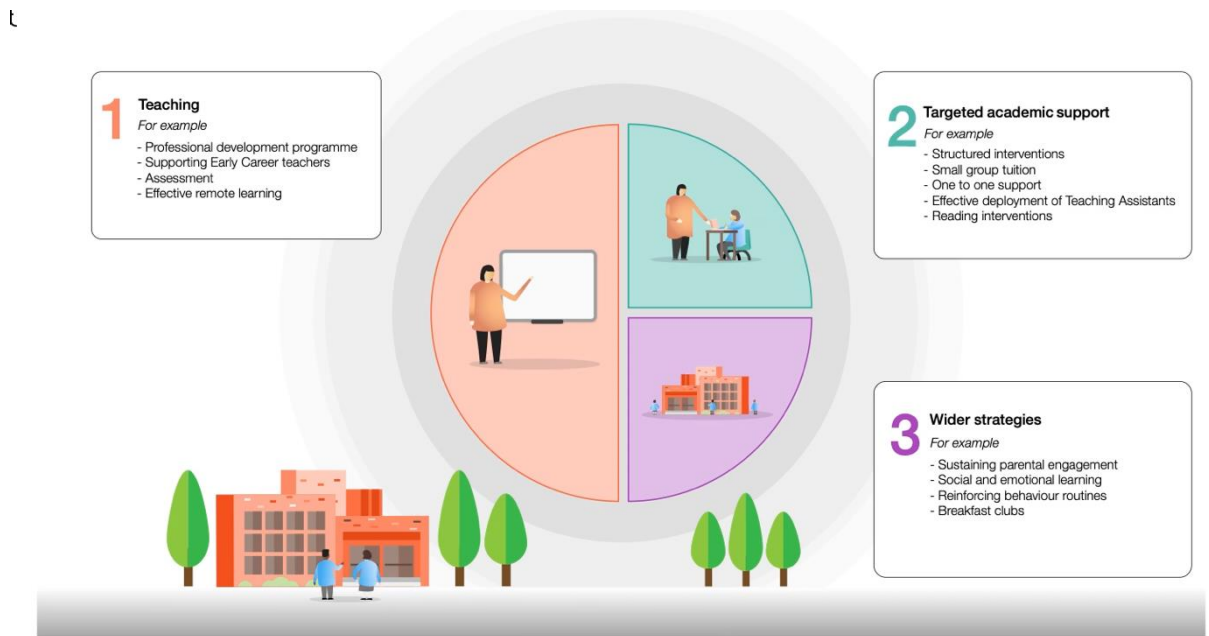


Wexham Court Primary School Proposed Plan For The Use Of Catch Up Funding

This plan works alongside the:

- Strategic Action Plan
- Pupil Premium Grant Action Plan
- Sports Premium Action Plan
- School Professional Develop Plan
- The Professional Learning Community (PLCs)

At Wexham Court Primary School, we use evidence-based research to inform the actions we take. We have followed the Education Endowment Fund's Guidance and adopted a three-tier model of support.



When referring to catch up at Wexham Court we are refereeing to extra planned opportunities to identify gaps in learning and correct misconceptions.

1. Teaching

Professional development for staff and LSAs

The planned professional development has been reviewed to include remote learning.

Senior Leaders

All to complete Evidence Based Learning Assessment Module

Cost: £360



Whole School

- Training on Accelerated Reader and MyON
- Purchase of MyON
- Training on online Maths Mastery adaptations
- Training on phonics catch up and purchase of online resources
- Training on Online Safety and acceptable usage
- Training on how to plan and deliver effectively remote learning via a blended model (EEF planning guidance.
- SEND INSETs how to ensure SEND are able to cover the curriculum remotely
- Continued development a coherent, sequenced curriculum and effective and timely assessment.

Newly Qualified Teachers (NQTs)

The NQT CPD has been review and rewritten with material from Ambitions Institute. NQTs have online modules aimed at assessing pupil gaps in understanding.

Learning Support Assistants (LSAs)

LSA training on supporting SEND through the levels of scaffolds, through worked examples and through targeted vocabulary development.

Cost :

12 sessions over 2 years

2. Targeted Academic Support

Nuffield Early Language Intervention Programme (NELI)

The Reception Nuffield Early Language Intervention Programme (NELI) is a 20-week targeted programme designed to improve the oral language skills of children aged 4-5 in need of support in this area. The programme can be delivered by a trained teaching assistant (TA), or early years educator, through small group and one-to-one sessions.

The programme has an initial focus on expressive and receptive vocabulary, listening and narrative skills through discussion of key thematic images and the retelling, creating and summarising of stories. During the latter half of the programme, phonological awareness and letter-sound knowledge activities are also introduced as a foundation for early literacy skills.

The link to more information reading this programme

<https://educationendowmentfoundation.org.uk/covid-19-resources/neli/neli-faq/>



Cost:

- Training of staff member
- 4 hours a week to delivery to 5 children
- Staff time to plan
- Resources associated such as props and software
- Time to write up the evaluation and report to EEF.

Tutoring of pupils

There are two programmes available through the National Tutoring Programme

- Academic mentors at £19,000 a year
- Approved Tutors offering sessions from £22- £29 per hour, purchased in block session of 15.

We have looked into this and feel that the school has enough staff members to offer 1:2 tutoring of 12 children x12 weeks, which we will run twice. Tutors will be paid £300 per course.

Connects Club

An early year's programme aimed at connective hard to reach families who are PP. This is either online or at school. A 12-week programme delivered by EYPs and Teachers.

COST: EYP extra time, resources each week circa £40

Catch Up Phonics

An extra 1:1 phonics group in year 1 – 4 to consolidate missed learning or misconceptions.
Purchase of RWI videos to watch at home
Purchase of Oxford reading tree online phonics books.

Cost:

Mental Health Support Teams (MHST)

A trail programme from Berkshire Health aimed at supporting pupils and families with mental health strategies. The school will support the develop of two trainee mental health first aiders who will support pupils one at a time. Support families and help the school identify the best agency support for pupils.

Cost:

Jigsaw Resilience package

A targeted resilience training package aimed at pupils who are struggling to cope with the pressure of Lockdown and the virus.

Cost: Staff member and resources



3. Wider strategies

Community is essential to our success and we thrive together. Teachers and leaders have listened to and responded to the needs of our parents. As a result, will implement the following:

New Behaviour Policy and guidance

The school has implemented a new behaviour approach that will be implemented this year and is remote learning friendly. Pupils and parents will receive feedback on positive engagement and a willingness to make positive choices.

Fitness and healthy life styles

The purchase of new equipment which can be kept separate in bubbles,
Dance classes to increase intensity of a workout.
After school clubs for each bubble.
Review of Healthy eating policy.

Cost: See Sports premium funding

Video Training for parents online

Short videos to help parents better access key technology or learn/remind them of key concepts such as chunking/fractions/word classes.

Forms for feedback

Parents will be asked to provide feedback and ideas via the use of Forms

Connects Club

See above

Teacher Parent Talk Time

Staff availability for an hour a day to support or respond to parents, thus sustaining engagement.

School Street Closure

The school was worked alongside the LA to implement a temporary street closure, enabling parents to socially distance while queueing

Cost: Three Marshalls



Purchase of laptops

We believe that all pupils should have access to their teacher and the learning materials used. The teacher can provide valuable feedback on their work and correct misconceptions or errors. This interaction also provides a very important social component that many are lacking. Therefore, the school will purchase an additional 30 laptops to loan to pupils.

Cost:

Increase MyON subscription

As pupils have limited access to books, we propose to increase the number of books available online via the MyON platform. This will give pupils a much wider range of books to select from and read.

Cost: